

## ROS Maintains Its Commitment to State-of-the-Art Cancer Care with Exciting New Technology

Radiation therapy plays a significant role in the treatment of most cancers. Often integrated with surgery and/or chemotherapy, radiation therapy is typically administered daily over a several-week period. The technological advances in radiation therapy are both exciting and challenging. For over 23 years, Radiation Oncology Services (ROS) has been committed to quality cancer care in the community by providing each of its centers with state-of-the-art technology. . . close to home.

### IMRT: Revolutionary 3D Therapy

The advent of 3D conformal therapy revolutionized radiation oncology in the 1990s. Through the advances in 3D technology and the use of sophisticated treatment planning computers, the radiation oncologist is able to design a treatment plan in which the x-ray beams actually *conform* to the shape of the cancer. The subsequent

**"After extensive study, we are excited about the addition of Elekta and BrainLab IGRT technology. Our physicians are confident the innovative technology will improve the quality of care offered to ROS patients. Our goal is to provide cutting edge radiation oncology close to home."**

**J. Warner Ray, M.D.**

**Medical Director, Radiation Oncology Services**

development of Intensity Modulated Radiation Therapy (IMRT) revolutionized 3D conformal therapy and is now the standard of care for patients requiring high dose



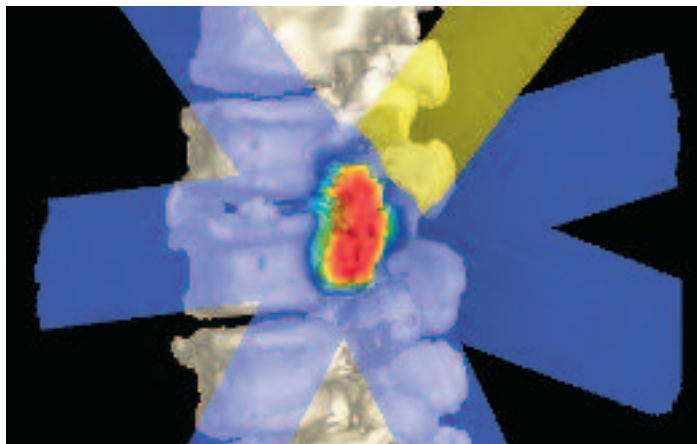
The Elekta Synergy® digital linear accelerator

radiation treatment. IMRT technology allows the physician to more accurately define the radiation dose to the cancer and simultaneously limit the dose to surrounding normal structures. In an IMRT plan, each beam is composed of multiple "beamlets" which modify the intensity of each beam. The overall effect is a more uniform and conformal dose to the cancer that in turn allows dose escalation, improved clinical outcomes and less treatment-related side effects.

### IGRT: The Ultimate 3D Therapy

Image Guided Radiation Therapy (IGRT) is an exciting new technology developed to better account for the two common day-to-day treatment variations: patient position and organ motion. With IGRT, high-resolution x-ray

images are obtained daily with the patient in the treatment position just moments before the treatment delivery. These daily *snap shots* are compared to previous x-ray images used in the treatment planning process. If any discrepancy in position or organ location exists, the patient's position is shifted to correspond perfectly to the treatment plan. The result is unmatched clinical confidence that each and every treatment is delivered with precision, accuracy and consistency.



IGRT localizes the tumor before each daily treatment

## ROS Installs Elekta Synergy® and BrainLab ExacTrac®

ROS-Riverdale and ROS-Cobb centers are currently installing new linear accelerators to better meet the needs of our cancer patients. The Elekta Synergy® digital linear accelerator is an advanced IGRT system that simultaneously images and treats patients correcting for internal

### FOR PATIENTS, THE USE OF IGRT MEANS:

- A higher and more effective dose of radiation can be safely delivered.
- The ability to treat a cancer previously thought to be untreatable because of its proximity to critical organs.
- Reduced radiation-induced side effects, resulting in improved quality of life.
- Radiation therapy that is more precise than ever before.

organ motion and set up variations. To further enhance our IGRT capabilities, ROS is partnering with BrainLab and has installed their ExacTrac® IGRT system in order to upgrade our existing linear accelerators at ROS-Griffin and ROS-Newnan. “After extensive study, we are excited about the addition of Elekta and BrainLab IGRT technology,” says J. Warner Ray M.D., Medical Director, Radiation Oncology Services. “Our physicians are confident the innovative technology will improve the quality of care offered to ROS patients. Our goal is to provide *cutting edge* radiation oncology close to home.”



## Office Locations

### Administration

275 Professional Court, Suite A  
Riverdale, GA 30274  
770. 994. 1650

### Cobb

1800 Hospital South Drive  
Austell, GA 30106  
770. 948. 6000

### Griffin

725 South Eighth Street  
Griffin, GA 30224  
770. 228. 3737

### Newnan

211 Millard C. Farmer Ind.  
Boulevard  
Newnan, GA 30263  
770. 254. 9600

### Riverdale

255 Professional Court  
Riverdale, GA 30274  
770. 997. 8424

### Northside Hospital Cancer Center

1000 Johnson Ferry Road  
Atlanta, GA 30342  
404. 851. 8850

### South Fulton Medical Center

1136 Cleveland Avenue, Suite 119  
East Point, GA 30344  
404. 466. 6100

For more information about  
IMRT, visit our web site at  
[www.radonc.com](http://www.radonc.com)