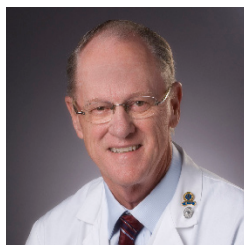


## The Top Docs of Radiation Oncology Services

### ROS Physician Staff:



Undergraduate: Emory University  
Medical School: Emory University  
Residency: University of California at San Francisco

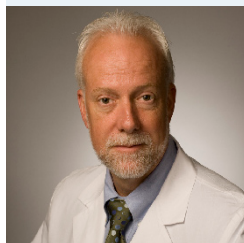
Started ROS in: 1975

*"Our patients, referring doctors and the communities we serve count on ROS for quality radiation therapy. The full strength of ROS is behind each of our patients and their families."*

J. Warner Ray, M.D., FACRO

Dr. Ray, an Atlanta native, is the founder and medical director of Radiation Oncology Services. His vision and leadership have resulted in eight community-based cancer centers throughout the greater Atlanta area as well as numerous cancer treatment programs. It is through Dr. Ray's strong commitment to quality that Radiation Oncology Services is known for blending the very technical aspects of radiation therapy with the compassionate and personalized care needed for each patient and family.

Since 1975, Radiation Oncology Services (ROS) has been providing quality radiation therapy in the metropolitan Atlanta area. Each year, over 2,000 new cancer patients receive treatment at an ROS center. ROS is committed to quality radiation therapy by equipping its Joint Commission approved centers with state-of-the-art technology. However, it is our staff of thirteen board-certified radiation oncologists who provide the critical link between advanced technology and compassionate cancer care.



Undergraduate: West Georgia College  
Medical School: University of Georgia  
Residency: Emory University  
Joined ROS in: 1982  
Primary ROS location: ROS-Cobb

*"Over my many years at ROS, I've witnessed the tremendous growth in our organization. With each passing year, we are able to touch the lives of more and more cancer patients."*

David L. Shaw, M.D.



Undergraduate: Georgia Southern/  
University of Georgia Pharmacy School  
Medical School: Medical University of South Carolina  
Residency: Medical University of South Carolina  
Joined ROS: 1996  
Primary ROS location: ROS-Newnan  
Piedmont Fayette Cancer Center

*"My patients are my professors. Every day they teach me about the diseases I treat, the subtleties of life and illness, and how to live with cancer with dignity. More importantly, my patients have taught me a spiritual understanding of life."*

Diana A. Santiago, M.D.



Undergraduate: University of Toledo  
Medical School: Ohio State University  
Residency: University of Texas  
Joined ROS in: 1992  
Primary ROS location: ROS-Riverdale  
Henry Radiation Oncology Center

*"I believe ROS is the most respected health care company in metropolitan Atlanta. I personally am very proud to have made a significant contribution to ROS for more than 18 years."*

John H. Giesler, M.D.



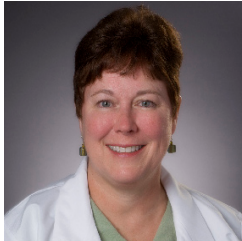
Undergraduate: University of Virginia  
Medical School: University of Cincinnati  
Residency: University of Cincinnati  
Joined ROS: 2001  
Primary ROS location: Saint Joseph's Hospital of Atlanta

*"Caring for cancer patients is both professionally and personally rewarding. Each day brings new opportunities to help someone in need."*

Peter W. Possert, M.D.

*“Our physician staff is not only highly qualified but each is whole-heartedly dedicated to the overall well being of the cancer patients we serve. Our referring doctors can count on each ROS physician to provide the clinical expertise needed for the diverse needs of their patients.” – DR. RAY*

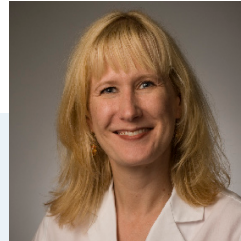
ROS doctors are part of Radiation Oncology Services’ thirteen-physician group comprised of highly skilled board-certified radiation oncologists.



Undergraduate: Clemson University  
 Medical School: University of Louisville  
 Residency: University of Pennsylvania  
 Joined ROS: 2002  
 Primary ROS location: ROS-Griffin  
 Piedmont Fayette Cancer Center

*“My patients and their families become like family to me. I look forward to our follow-up visits as we mark and celebrate the years since their initial diagnosis.”*

Robena “Robbie” Medbery, M.D.



Undergraduate: University of Michigan  
 Medical School: Wayne State University  
 Residency: Emory University  
 Joined ROS: 2008  
 Primary ROS location: ROS-Cobb  
 South Fulton Medical Center  
 Saint Joseph’s Hospital of Atlanta

*“Working with the other ROS doctors on behalf of our patients is one of the most exciting aspects of my job. Collaboration is the basis for top-notch cancer care.”*

Shelley R. Machuta, M.D.



Undergraduate: Johns Hopkins University  
 Medical School: Duke University  
 Residency: University of Michigan  
 Joined ROS: 2004  
 Primary ROS location: Piedmont Fayette Cancer Center

*“The word ‘cancer’ is frightening to a newly diagnosed cancer patient, but to me it means the opportunity to ease fear and spread hope.”*

Geetha S. Rao, M.D.



Undergraduate: University of Virginia  
 Medical School: Washington University  
 Residency: Washington University  
 Joined ROS in: 2009  
 Primary ROS location: ROS-Riverdale  
 Henry Radiation Oncology Center

*“I feel privileged to be in a career where each day I can personally make a difference in peoples’ lives, whether it is as simple as asking how they are feeling that day or as profound as curing their cancer.”*

Sasha H. Wahab, M.D.



Undergraduate: Georgia Institute of Technology  
 Medical School: Medical College of Georgia  
 Residency: Medical College of Georgia  
 Joined ROS in: 2005  
 Primary ROS location: Saint Joseph’s Hospital of Atlanta

*“I truly enjoy following patients for years after their treatment. I love to see them move past their cancer and enjoy their lives.”*

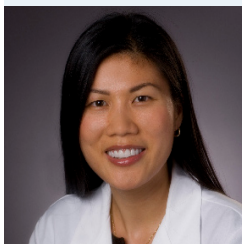
Nancy H. Wiggers, M.D.



Undergraduate: University of Miami  
 Medical School: Medical College of Ohio  
 Residency: Emory University  
 Joined ROS: 2010  
 Primary ROS location: ROS-Griffin, ROS-Newnan  
 Piedmont Fayette Cancer Center

*“Over the years I have acquired a deeper level of empathy for patients. I have a general curiosity to learn about each patient as an individual, which as a result, makes me a better oncologist.”*

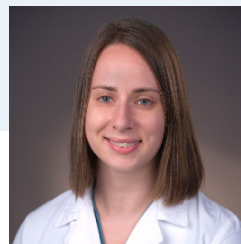
Edmund L. Simon, M.D.



Undergraduate: Rhodes College  
 Medical School: University of Tennessee  
 Residency: Medical University of South Carolina  
 Joined ROS: 2005  
 Primary ROS location: Henry Radiation Oncology Center  
 ROS-Riverdale

*“I find that listening to patients and providing emotional support is sometimes more important to patients than the actual treatment itself.”*

Kim N. Vu, M.D.



Undergraduate: University of Florida  
 Medical School: Emory University  
 Residency: Emory University  
 Joined ROS: 2010  
 Primary ROS location: ROS-Cobb, South Fulton Medical Center  
 Saint Joseph’s Hospital of Atlanta

*“I feel privileged that I have the opportunity to guide patients through their cancer treatment. I love what I do and enjoy coming to work each day.”*

Heather G. Gatcombe, M.D.

To learn more about ROS, our locations, our staff and our services, please visit: [www.radonc.com](http://www.radonc.com).

**Cobb** 1800 Hospital South Drive, Austell, GA 30106 770. 948. 6000

**Griffin** 725 South Eighth Street, Griffin, GA 30224 770. 228. 3737

**Henry Radiation Oncology Center** 960 Hospital Drive, Stockbridge, GA 30281 678. 251. 1099

**Newnan** 211 Millard C. Farmer Industrial Boulevard, Newnan, GA 30263 770. 254. 9600

**Riverdale** 255 Professional Court, Riverdale, GA 30274 770. 997. 8424

**St. Joseph’s Hospital of Atlanta** 5665 Peachtree Dunwoody Road, N.E., Atlanta, GA 30342 678. 843. 7004

**South Fulton Medical Center** 1136 Cleveland Avenue, Suite 119, East Point, GA 30344 404. 466. 6100

**Piedmont Fayette Cancer Center** 1267 Highway 54 West, Suite 1500, Fayetteville, GA 30214 770. 719. 5850



**ROS-Administration**

275 Professional Court, Suite A, Riverdale, GA 30274

770. 994. 1650

[www.radonc.com](http://www.radonc.com)