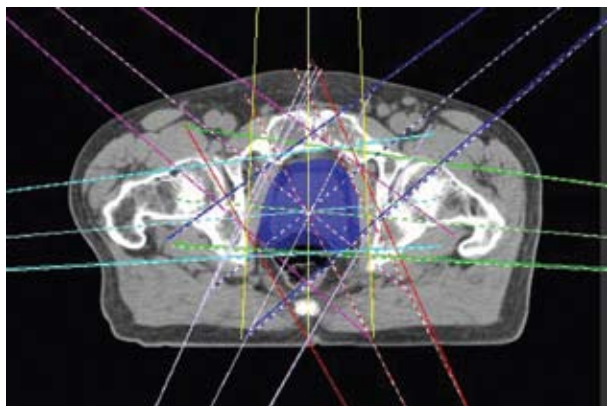


Radiation Oncology Services Provides State-of-the-Art Prostate Cancer Treatment...

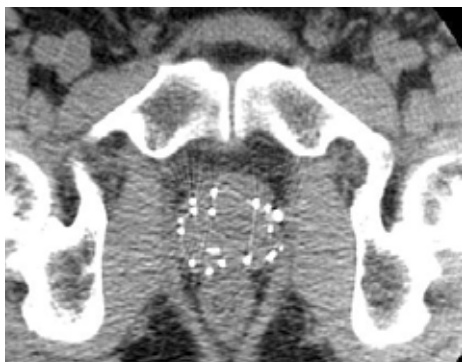
Close to Home

Did you know?

Prostate Cancer is the most common non-skin cancer diagnosed each year in the United States. This year, 218,890 new cases of prostate cancer are expected in the United States, resulting in an estimated 27,000 deaths. In 2006, Georgia reported 5,490 new cases of prostate cancer. Spalding county reported 181 new cases of prostate cancer between 2000 and 2004.



Multiple shaped beams converge on the prostate forming the basis of IMRT.



Small radioactive seeds give a high dose of radiation to the prostate.



Our state-of-the-art linear accelerators deliver safe and effective radiation therapy.

Common Treatment Options

WATCHFUL WAITING: The decision by physician and patient to forgo active treatment in favor of close follow-up with regular PSA monitoring and physical examination. This approach is commonly used in elderly men or in men with significant other medical problems.

SURGERY: The surgical removal of the prostate by open radical prostatectomy, laparoscopic prostatectomy, or robotic-assisted prostatectomy. Surgery may be an option for healthy men under 70 years old.

RADIATION THERAPY: Non-surgical therapy utilizing cancer-killing radiation given by techniques such as high dose external beam radiation therapy (EBRT) or brachytherapy (e.g.: radioactive seed implant). Most men with prostate cancer, regardless of age, can be treated with some form of radiation therapy.

Indications for Radiation Therapy in the Treatment of Prostate Cancer

EARLY STAGE:

- High Dose EBRT
- Radioactive Seed Implant

LOCALLY ADVANCED:

- High Dose EBRT +/- androgen deprivation
- Radioactive Seed Implant often given in conjunction with EBRT

ADJUVANT THERAPY: The use of EBRT after radical prostatectomy in patients with adverse pathologic features.

PALLIATIVE CARE: EBRT is often used to relieve symptoms from metastatic prostate cancer (bone pain, bleeding, spinal cord compression).

What Patients Can Expect at Every ROS Center

- A Commitment to Patient Care: An exceptional staff is the integral link between technology and compassionate cancer care. ROS boasts a staff of board-certified radiation oncologists, nurses, physicists, dosimetrists and radiation therapists. To learn more about our staff, please visit www.radonc.com.
- A Commitment to Quality: Since 1994 all ROS Centers have been fully accredited by the Joint Commission on Accreditation of Healthcare Organizations.
- A Commitment to Technology: By keeping up with the latest technological advances in radiation therapy, our referring doctors and patients can be confident that our facilities are equipped with the same cutting-edge technology as major cancer centers across the country.

Office Locations

Administration

275 Professional Court
Suite A
Riverdale, GA 30274
770. 994. 1650

Cobb

1800 Hospital South Drive
Austell, GA 30106
770. 948. 6000

Newnan

211 Millard C. Farmer
Ind. Boulevard
Newnan, GA 30263
770. 254. 9600

Riverdale

255 Professional Court
Riverdale, GA 30274
770. 997. 8424

South Fulton

Medical Center
1136 Cleveland Avenue
Suite 119
East Point, GA 30344
404. 466. 6100

"Cancer treatment close to home is so important to the overall well-being of cancer patients. At ROS-Griffin, we provide quality radiation therapy to patients in the area so they do not have to travel far to receive the cancer care they need."



Robbie Medbery, M.D.

ROS - Griffin: Your Community Resource for Prostate Cancer Treatment

ROS-Griffin opened in 1990 to provide Spalding and adjacent counties with comprehensive radiation therapy services. Since 2002, Dr. Robbie Medbery has been the director of all clinical activities at ROS-Griffin. She is active in the cancer programs at area hospitals and enjoys an excellent relationship with physicians in the community. Prostate cancer patients can benefit from Dr. Medbery's strong commitment to the community as well as her interest in the many issues involved in the treatment of prostate cancer. Referring physicians as well as prostate cancer patients can count on Dr. Medbery and ROS - Griffin to provide quality prostate cancer treatment that allows patients to stay close to home, work and family.

About ROS

Radiation Oncology Services has been providing cancer care to patients in the Atlanta area for over 25 years. Under the medical direction of J. Warner Ray, M.D., ROS uniquely couples cutting-edge technology with compassionate patient care. It is our mission to provide state-of-the-art evaluation and treatment for cancer patients requiring radiation therapy. Our physicians and staff collaborate with other healthcare providers to assure multi-disciplinary and comprehensive services for all patients in a caring environment.



Griffin

725 South Eighth Street Griffin, GA 30224
770. 228. 3737 www.radonc.com